


# SI INDUCTION TRIP

Abernethy Trust Outdoor Centre :: Barcaple



# WHY DO WE DO THIS TRIP?

- ▶ Starting secondary is a big deal!
  - ▶ Loads more people, new teachers
    - ▶ It can be overwhelming!
  - ▶ New SIs get to know the new people in their class
    - ▶ Gives staff opportunities to get to know the young people really well
  - ▶ You will learn to work together to get through challenges!
- 

# WHAT HAPPENS ON THE TRIP?

- ▶ From arriving pupils will take part in a range of activities.
- ▶ Tree Climb, Zip line, abseiling, blind ropes courses, assault courses, canoeing, raft building, mountain biking and more...

# WHY ARE WE GOING TO BARCAPLE?

- ▶ It is tried and tested!
- ▶ The resources are great!
- ▶ The activities are varied!
- ▶ It's far away from home!



# GAMES ROOM





# GAMES ROOM





# LAUNCH POINT FOR ZIPLINE





# PATH THROUGH TREES FOR ZIPLINE





# ROPES COURSE





# CHALLENGE





# OBSTACLE COURSE





# ROPE BRIDGE TO TREE ABSEIL





# BLIND TRAIL





# LARGER ASSAULT COURSE





# ROPE BRIDGE





# CRATE STACKING AND FOOTBALL PITCH





# GRASS WITH LOCHAN IN BACKGROUND





# LOCHAN FOR WATER ACTIVITIES





# DINING FACILITIES



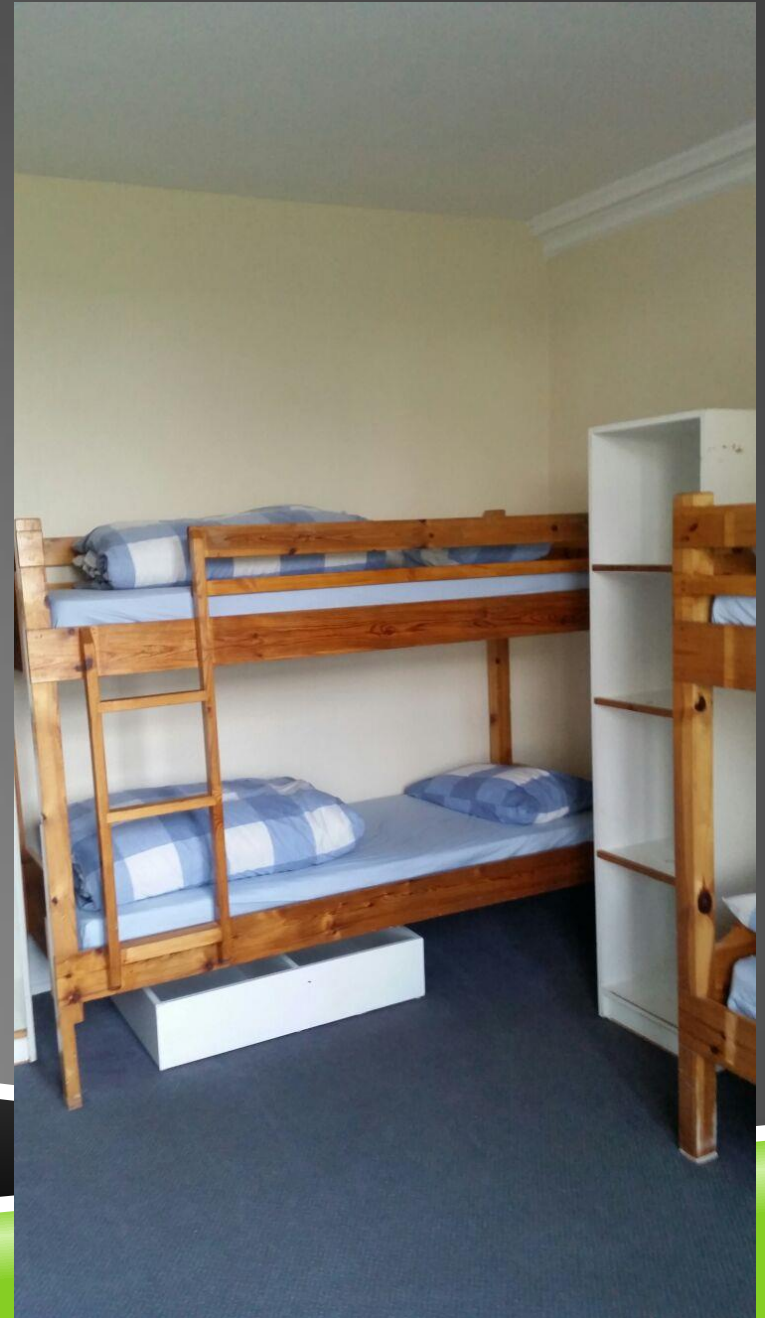


# DINING





# BEDROOMS





# HOUSE





# WHAT ARE THE DETAILS?

- ▶ 3 day/2 nights trip
  - ▶ Mon 11<sup>th</sup> to Wed 13<sup>th</sup> September
  - ▶ Wed 13<sup>th</sup> to Fri 15<sup>th</sup> September
- ▶ Meals are prepared on site and accommodation is dorm style rooms
- ▶ Total cost will be between £135 and £155
- ▶ We would like to get a deposit in before summer!



# LAST YEARS TRIP