

# Literacy in the BGE

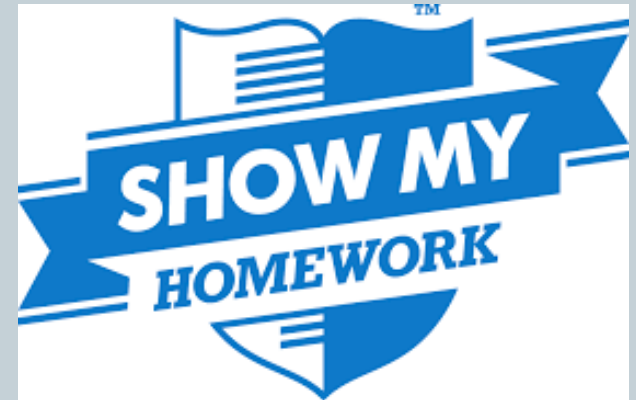


## **FAMILY LEARNING SUPPORT STRATEGIES**

# Support with homework tasks



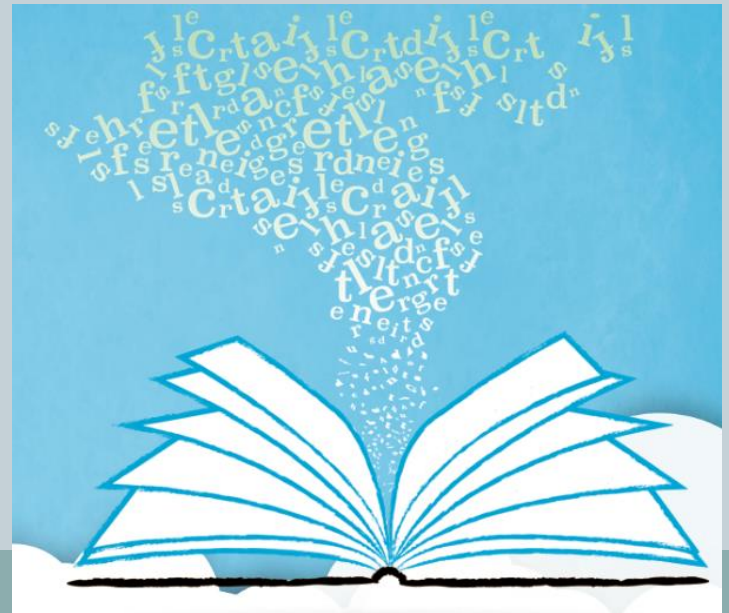
- S1 should be receiving homework from all class teachers.
- Hyndland Secondary use Show My Homework to track this.
- You and your child can both get access to SMH via the GLOW website or the SMH app.
- Parental usernames and log-in information will be distributed over the next fortnight.



# Reading for pleasure



- Hyndland Secondary School English department are taking part in the First Minister's Reading Challenge again this session.
- This program is designed to build a culture of reading for pleasure in the school.
- All S1 students have access to the school library on a weekly basis during English lessons.
- Reading as a homework task isn't always set on SMH.



# Reading for pleasure



- You can support these weekly library sessions by
  - Reading together
  - Discussing what your child is reading
  - Visiting your local library together
  - Encouraging reading time at home to be free of distractions.
  - Encouraging students to complete their reading journal/reading log.

# Literacy around the house



- Its useful for student to see where reading and writing vital in day-to-day life. Involve them in everyday reading and writing such as...
  - Shopping lists
  - Recipes
  - Road signs
  - Food packaging
  - Bus timetables
  - Emails and post
  - Instructions
  - Etc...

# Vocabulary building



- All S1 students will have a slim vocabulary jotter from the English department.
- Encourage them to note down any unknown/unfamiliar/difficult words in here as they complete homework tasks.
- This can be used to support literacy across all subject areas and will assist in building vocabulary.