

# P7 PARENTS' INFORMATION EVENING

## Primary to Secondary Transition



# Format of this evening

- Introduction- Ms McNeil
- Overview of P7/S1 Transition – Mrs Forrester
- An introduction to S1 at Hyndland Secondary
- Supporting our pupils – Mr Carstairs
- S1 Barcaple Residential Trip – Mr Furniss
- Overview of life at Hyndland – S6 School Captains

# The Senior Leadership Team at Hyndland

**Ms McNeil**  
**Head Teacher**



**Mrs Edgerton**  
**DHT S1/2**



**Mr Greechan**  
**DHT S2/3**



**Mr Mochan**  
**DHT S5/6**



**Mrs Forrester**  
**DHT S6/P7-S1**



# Transition Calendar 2016-2017

September 2016 – January 2017

- Tonight
- Curricular visits in Maths, English and Music
- Teambuilding Activities in the PE Department - 6<sup>th</sup> October
- Regular visits by the Support for Learning Department
- Visits from Depute Head Teacher, Pastoral Care , S1 pupils and S6 Captains – January

# Transition Calendar 2016-2017

February – June 2017

- Primary 7 Open Evening Workshops for both Parents and Primary 7 pupils – 16<sup>th</sup> March 6pm
- Visits to English Department – May
- Transition meetings
- Cluster training events
- Primary 7 Information Evening – 24<sup>th</sup> May
- Induction Days – 23<sup>rd</sup> and 24<sup>th</sup> May
- Transfer of pupil information – numeracy, literacy and health & well-being information based on prior learning
- Transfer of P7 Pupil Learning Profile and transfer of Primary 7 report and pupil records.

# Settling in support

- S1 Introduction Assemblies
- Senior mentors weekly mentor visits to Personal Support Time
- Buddy System
- Weekly PSE Programme – delivered by Pastoral Care
- Daily 20 minute Personal Support Time – delivered by Tutor teachers
- S1 Residential Trip to Barcaple
- Early alert – September
- Extra Curricular – September Freshers Fayre
- S1 Review Meetings – October
- S1 Settling in Interviews with Pastoral Care
- Welcome Disco – Halloween
- Target Setting and Interim Reports – December

# Our aim in the S1 Curriculum

The aim of the S1 Curriculum is to give every pupil an equal opportunity to discover her or his strengths, to provide opportunities for personal development, to be fully immersed in the ethos and life of the school

There will be a focus of improving pupils' knowledge, and developing skills in literacy, numeracy & health and wellbeing.

# Our S1 Curriculum



Smooth transition in all curriculum areas to build on primary experiences





# The S1 Journey

Languages - English (4 periods) & French (3 Periods)

Mathematics (4 periods)

Expressive arts – Art & Design (2 periods), Drama (1 period) and Music (2 periods)

Health and wellbeing - Physical Education (3 periods) & Personal & Social Education (1 period)

Technologies – Technical (2 periods), Health and Food Technology (1 period) & Business and Computing (1 period)

Sciences – Elements of Biology, Chemistry and Physics (3 periods)

Social studies (3 periods)

Religious and moral education (1 period)

Interdisciplinary studies

Barcable – Sept 2017  
IDL Week - May 2018

Personal Achievement

Development of the four capacities

1. Successful learners,
2. Confident individuals,
3. Effective contributors
4. Responsible citizens.

# Expected levels of progression

Curriculum for Excellence defines five levels of learning;

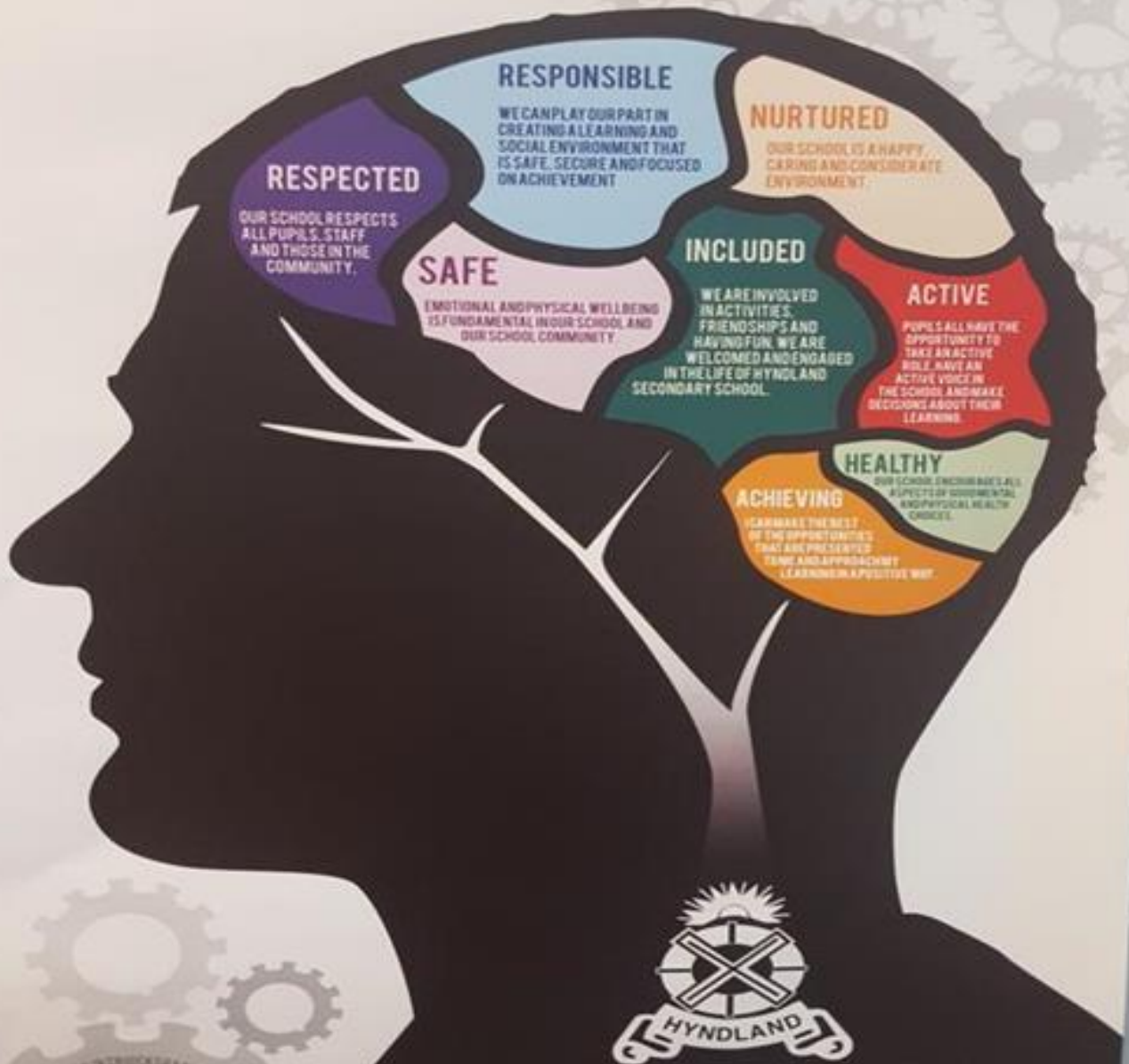
- **Early** The pre-school years and P1, or later for some.
- **First** To the end of P4, but earlier or later for some.
- **Second** To the end of P7, but earlier or later for some
- **Third and Fourth** S1 to S3, but earlier for some.
- **Senior phase** S4 to S6, and college or other means of study.

Year		Course
2017/ 2018 - S1	>	JUNIOR PHASE S1 CFE Curriculum
2018/2019 - S2	>	JUNIOR PHASE S2 CFE Curriculum
2019/2020 - S3	>	JUNIOR PHASE S3 CFE Curriculum with element of choice
2020/2021 - S4	>	SENIOR PHASE National 3, National 4 (assessed by teachers) & National 5 (final external assessment & coursework & Performance)
2021/ 2022 - S5	>	SENIOR PHASE National 3, National 4, National 5, Higher & Vocational Qualifications
2022/ 2023 - S6	>	SENIOR PHASE National 4, National 5, Higher, Advanced Higher & Vocational Qualifications

# Assessment Approaches

## Range of approaches

- On-going Assessment on a day to day basis
- Practical investigations
- Research
- Performances
- Presentations and discussions
- Learners' assessment of their own work and comparisons with others
- Written work
- Responses like tests and evaluation of a final product
- A piece of artwork, report or a project.



**RESPECTED**

OUR SCHOOL RESPECTS ALL PUPILS, STAFF AND THOSE IN THE COMMUNITY.

**RESPONSIBLE**

WE CAN PLAY OUR PART IN CREATING A LEARNING AND SOCIAL ENVIRONMENT THAT IS SAFE, SECURE AND FOCUSED ON ACHIEVEMENT.

**NURTURED**

OUR SCHOOL IS A HAPPY, CARING AND CONSIDERATE ENVIRONMENT.

**SAFE**

EMOTIONAL AND PHYSICAL WELLBEING IS FUNDAMENTAL IN OUR SCHOOL AND OUR SCHOOL COMMUNITY.

**INCLUDED**

WE ARE INVOLVED IN ACTIVITIES, FRIENDSHIPS AND HAVING FUN. WE ARE WELCOMED AND ENGAGED IN THE LIFE OF HYNDLAND SECONDARY SCHOOL.

**ACTIVE**

PUPILS ALL HAVE THE OPPORTUNITY TO TAKE AN ACTIVE ROLE, HAVE AN ACTIVE VOICE IN THE SCHOOL AND MAKE DECISIONS ABOUT THEIR LEARNING.

**HEALTHY**

OUR SCHOOL ENCOURAGES ALL ASPECTS OF GOVERNMENTAL AND PHYSICAL HEALTH CHOICES.

**ACHIEVING**

WE MAKE THE BEST OF THE OPPORTUNITIES THAT ARE PRESENTED TO US AND APPROACH OUR LEARNING IN A POSITIVE WAY.



**OUR VISION, OUR VALUES, OUR SCHOOL**



# Extra curricular life at Hyndland

- Junior Debating Club
- Eco Schools Committee
- Science Club
- Music – orchestra, band, choir to name but a few!
- Sports – Badminton, Basketball, Football and Rugby
- Film, Media and Class film/ Cartoon Clubs
- Chess Club
- Photography Club



# S1 Organisation

- 180 Pupils
- 9 classes of 20 pupils for practical classes
- 6 classes of 30 pupils for Language & Communication and Social Studies
- 16 Subjects (some in rotation and extended blocks)
- Interdisciplinary Work – e.g. John Muir Award week
- Mixed ability classes
- Some setting in Maths
- Literacy Support Programmes

# Pastoral Care Staff – House System

**Mr Carstairs**  
**Torridon House**



**Mrs Mills**  
**Rannoch House**



**Mrs Pollock**  
**Lomond House**



**Mr Nee**  
**Nevis House**



**Mrs Ritchie**  
**Katrine House**





# Pupil Support – Support for Learning

- Mrs M Wright – Principal Teacher
- Ms A Rennie
- Pupil Support Assistants

# Supporting Pupils

- Personal Support teacher
- DHT
- Subject Teachers
- School Counsellor provision
- School Nurse drop in
- Personal and Social Education – weekly slot
- Active Junior Council
- Senior Mentors
- Anti Bullying Policy – Respect Me

# Communication with parents

- School newsletter – The Hyndland News
- Letters - as appropriate
- Website
- Parents Meetings
- Reports – S1 Report May 2018
- Contact School – Pastoral Care/Depute Headteacher
- Parent Focus Groups
- Active Parent Council
- Twitter @HyndlandSec
- Facebook
- Homework Diaries

Be at the heart of your child's learning.



Many thanks for coming along tonight and we look forward to welcoming you back to Hyndland again very soon.

If you have any questions we will be happy to answer them at the end.