



Welcome to first year at
Hyndland Secondary
school

SPERO MELIORA - I HOPE FOR BETTER THINGS

CONTENTS

Page	
3	Introduction
4	Hyndland's Visions and Values
5 & 6	How the school is organised
7 & 8	The school day
9	People who can help me
10 & 11	Tips on how to stay organised
12	Creating an organisation checklist
13	Keeping on top of homework
14	Making new friends
15	Getting involved in clubs

SPERO MELIORA - I HOPE FOR BETTER THINGS

Welcome to Hyndland

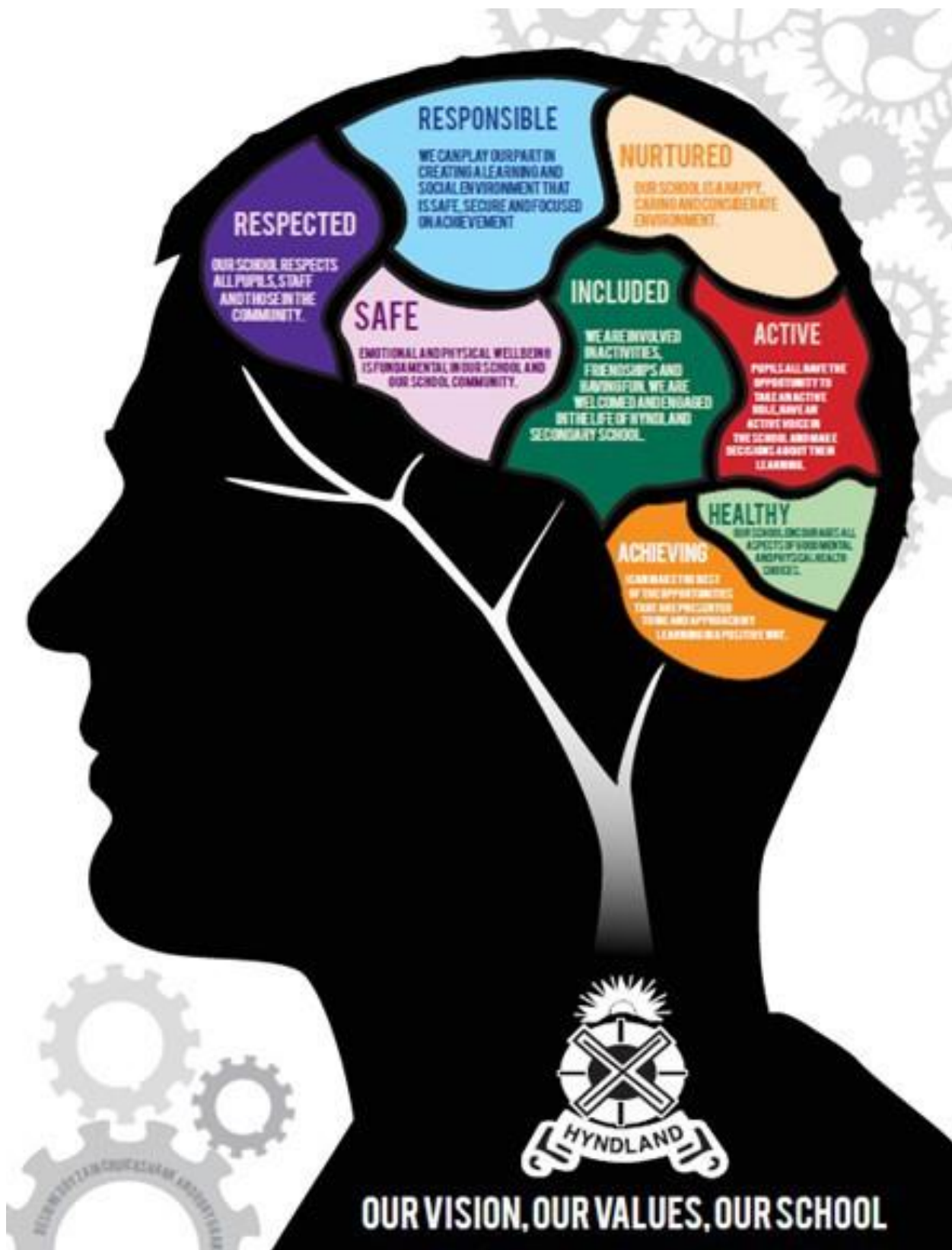
We hope that you find this booklet helpful in getting you prepared for becoming an S1 pupil in August.

Moving to a new school can be a nerve-wracking process but everyone around you is there to help and make it as enjoyable as possible. It is ok to be nervous about moving to Secondary School.

We will do our best to answer all your questions and give you as much information as possible.



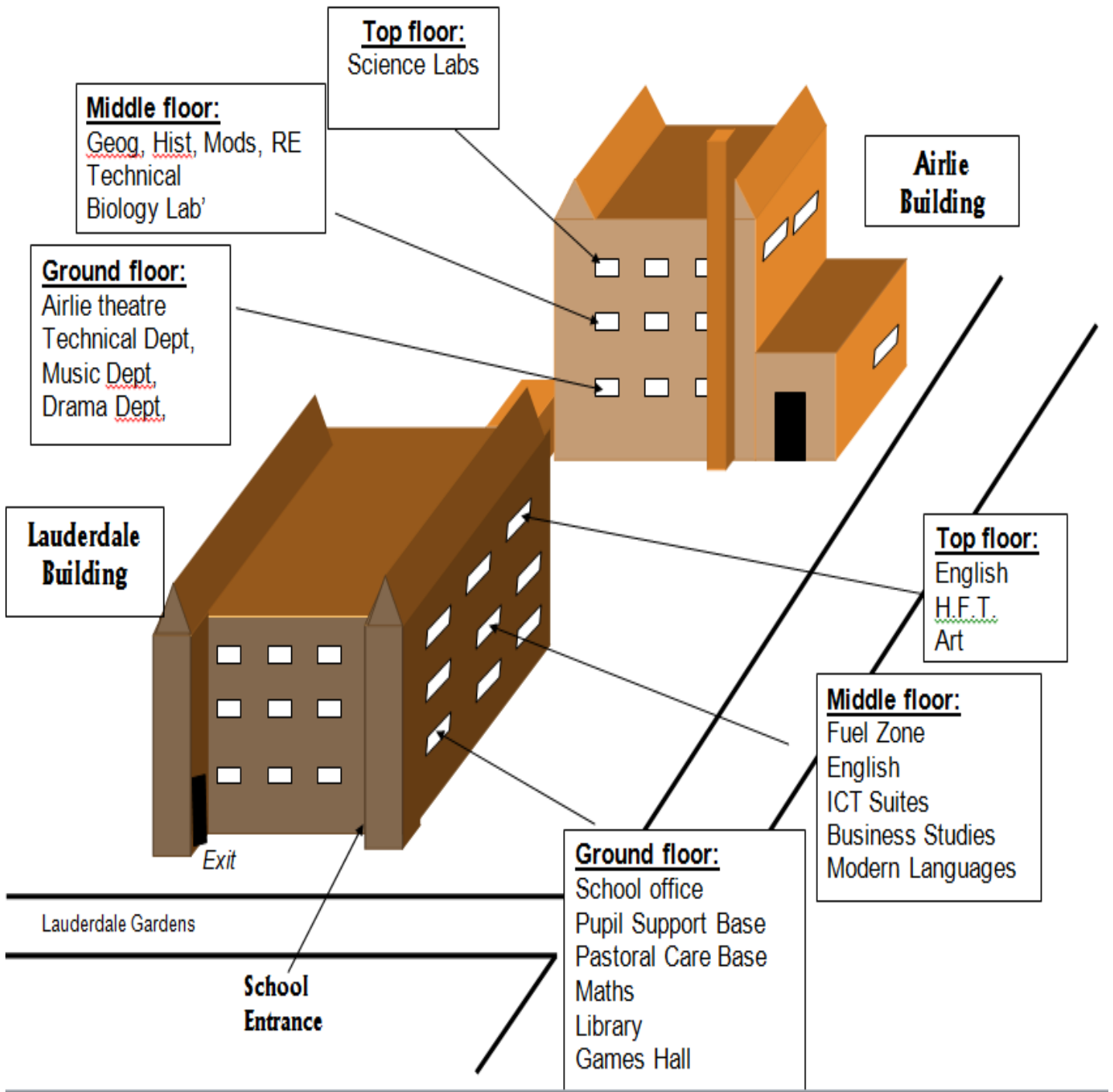
OUR Visions and values—this is our expectations
for all students at Hyndland



Our school building

Hyndland Secondary is split over two buildings—

Lauderdale Building & Airlie Building.



How the school is organised

Lauderdale Building—all rooms begin with ‘L’ on timetable:

Ground Floor	First Floor	Top Floor
School Office Pastoral Care Base Pupil Support Base Maths Library PE Games Hall	Fuel Zone English Maths ICT Suites Business Studies Modern Languages	English H.F.T Art

Airlie Building—all rooms begin with ‘A’ on timetable:

Ground Floor	First Floor	Top Floor
Airlie Theatre Technical Drama	Social Studies (Geography, History, Modern Studies & RE) Science lab Technical design room	Science Labs

The Lauderdale and Airlie Buildings are joined with a link corridor which you will use to move from one building to another.

The school day

At Hyndland Secondary, you will have one long day on a Monday, finishing at 3:40pm and 4 shorter days finishing at 2:50pm.

Period	Time
Period 1	8.45 - 9.45
Period 2	9.45 – 10:45
Interval	10.45 - 11.00
Period 3	11.00 - 11.50
Period 4	11.50 - 12.40
Lunch	12.40 - 1.20
Period 5	1.20 - 2.10
Period 6	2.10 – 2:50
Period 7 (Monday)	2:50 – 3:40

The school day

You will be issued with a timetable that will tell you where to go for each period of the day. It can be a bit daunting to look at first. But, it is really easy once you break it down. Here is a sample from an S1 timetable:

English S1 CFE Mrs Brown L210	Health & Food Technology S1 CFE Mrs McIlroy L215	Social Subjects S1 CFE Mr Thomson A107	Maths S1 CFE Mr Henderson L036
--	---	---	---

The first line tells you the subject you will be studying.

The second line tells you the level. In S1, all your classes will be CfE

The third line tells you the teacher's name

The fourth line tells you the room:

- The building: L (Lauderdale) or A (Airlie)
- The room number: If it starts with **0**, the room is on the **ground floor**

If it starts with **1**, the room is on the **first floor**

If it starts with **2**, the room is on the **second floor**

So looking at the example, this pupil has Social Subjects with Mr Thomson in the Airlie building first floor, followed by Maths with Mr Henderson in the Lauderdale building ground floor.

People who can help me

Pastoral Care

When you start at Hyndland Secondary, you will be put into a house, this may be the same house as older brothers or sisters. The head of the house is your pastoral care teacher who will meet with you for PSE lessons, individual meetings and they are your go—to person if you have any problems, worries or concerns. You will also meet your Pastoral Care Teacher when you will attend a House Assemblies. Your Pastoral Care Teacher can be found in the Admin corridor of the ground floor in the Lauderdale Building. Someone will always be there to help if needed!

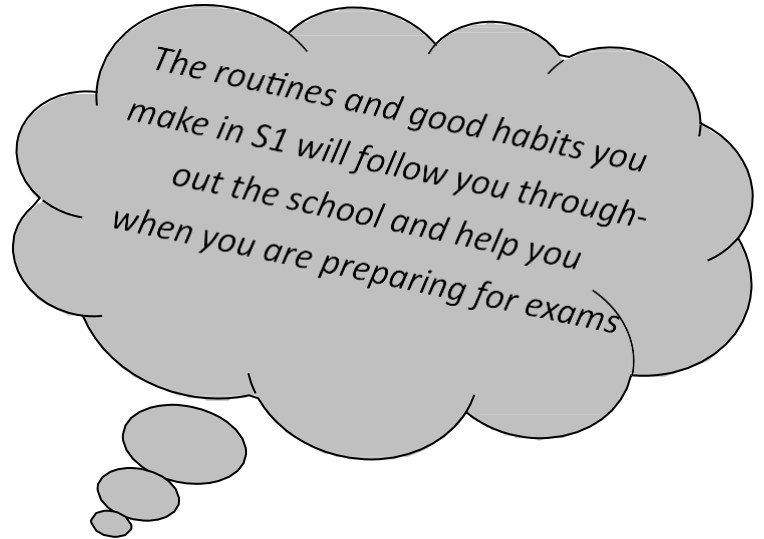
House Depute Head Teacher

Each House has a Depute Head Teacher who can help if your Pastoral Care Teacher is not around. They are situated in the Admin corridor on the ground floor of the Lauderdale Building next to Pastoral Care.

Tips on how to stay organised

Why is it important to be organised?

- To know what you need to bring to school each day
- To keep up to date with class work
- To be able to keep on top of homework
- To allow you to manage your free time



Stationary

- Your pencil case is a key part to being a well— organised pupil.
- The more organised your pencil case is, the less time at the start of each lesson you will spend looking for something to write with.
- Make sure your pencil case has at least three pencils, three pens, a sharpener and a rubber.

Having the right equipment

Some subjects may ask you to bring additional materials:

English - School library book

Maths – Calculator & ruler

Health & Food Technology - Container to take food home & money to pay for cooking

PE – T Shirt, Tracksuit bottoms or Shorts & trainers. You may be outside so a water-proof jacket or hoodie might be needed.

Timetable

- You will be encouraged to copy your timetable into your school planner
- Make another copy and put it either on a noticeboard in your bedroom or on the fridge door
- Many pupils take a photograph of their timetable using their phones as an Additional way of always having their timetable with them.

Tips on how to stay organised

Clear your bag out each night, removing books that you don't need for the next day

Pack your bag the night before

Get into the habit of using Show my Homework on your iPad—this will detail all homework / tests you may have.

Decide what you are wearing the night before and lay clothes out

Keep books/jotters in the same place all the time, this means you have less chance of losing them

Remember to always bring your iPad to school—charged and ready to use.

You MUST remember this each day for class.

Label or colour code your subject folders

Creating a checklist

Using your timetable you can tick off the materials that you will need for your classes each day.
Looking at this each night will mean you will be less likely to forget something important!

Item	Monday	Tuesday	Wednesday	Thursday	Friday
Planner					
Pencil case					
PE kit					
English folder					
Personal reading book					
Science jotter					
Geog/Hist/ Mods jotter					
Maths jotter					
Calculator					
HFT money					
Container for cooking					
French jotter					

Keeping on top of homework

It is very important to get into good habits with homework as it will keep you in a routine as you move through the school.

- Try to do your homework at the same time each day – some pupils like to start it as soon as they get home from school.
- Don't wait until the last minute to begin your work or project. If you work every day, you won't be faced with any surprises about how long the project takes, and you'll be fully prepared to finish on time.

Satchel:One—online app




- Download the app onto your school iPad and also the app Showbie as some staff use this to set homework across the school
- Your teacher will give you an approximate time that it should take you to complete the homework task
- You will have a homework checklist which will allow you to prioritise the homework that is due first and you can tick it off when it is completed.

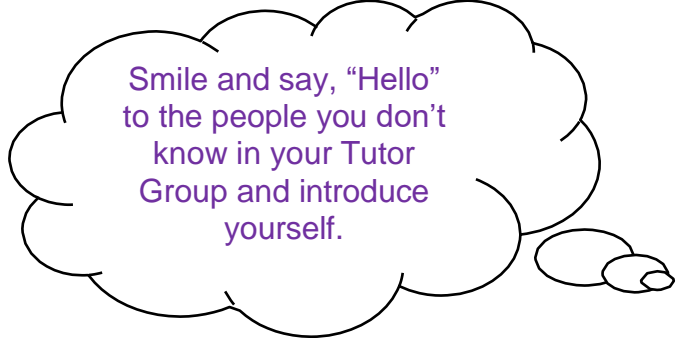
Making new friends

Starting at a new school is an exciting time and it is a great opportunity to make new friendships. But, it is ok to feel a bit nervous about this. Just remember, everyone is in the same boat!!

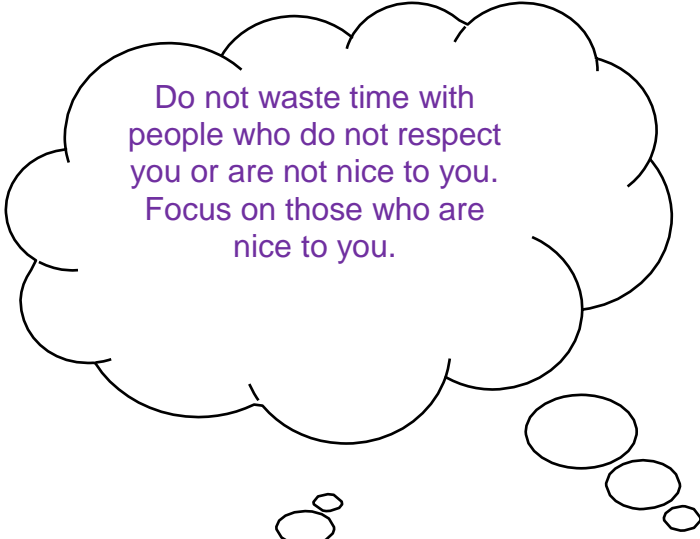
Here are some hints and advice to help you in those first few days if you are feeling very nervous.



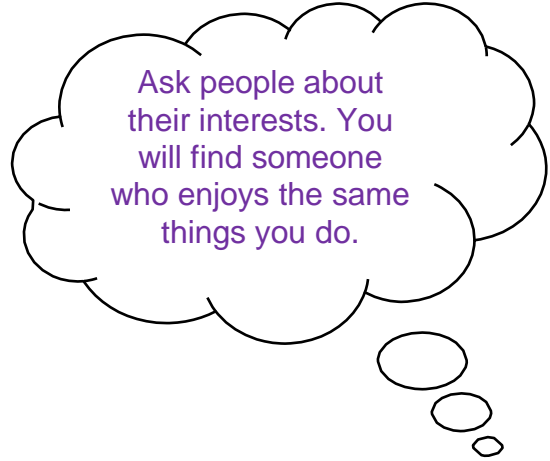
Give someone a compliment.




Smile and say, "Hello" to the people you don't know in your Tutor Group and introduce yourself.



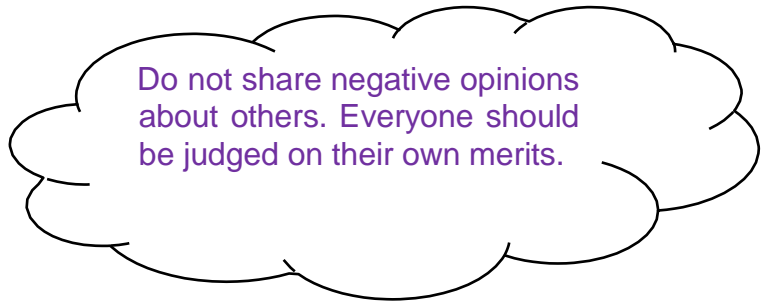
Do not waste time with people who do not respect you or are not nice to you. Focus on those who are nice to you.



Ask people about their interests. You will find someone who enjoys the same things you do.



Join in with a club that interests you. Try new things.



Do not share negative opinions about others. Everyone should be judged on their own merits.

Getting involved in clubs

At Hyndland Secondary, we are proud to have a wide range of clubs on offer to all pupils from S1 to S6. A few clubs which ran last year are listed below. In September you will be given a booklet detailing all of the clubs running during session 2021/2022.

Computing club **Chess club**
Junior Wind Band
Choir **Homework club**
String Orchestra **The morning social**
Rugby
Netball **Football**
Fitness **STEM**
Junk Culture

Joining a club is one of the best ways to make new friends and all S1s will be encouraged to do so.