

OUR VISION  
OUR VALUES  
OUR SCHOOL



# Student Induction - August 2020



A guide to keeping myself and others safe in Hyndland Secondary School



# Ensuring Hyndland is a safe space for all

- It is vital that we all remember that different members of our school community i.e. staff and students will have varying degrees of anxiety about a return to full-time school.
- It has never been more important therefore to ensure that we all work together to help make Hyndland a safe space for all members of our school community.



"Nothing beats kindness," said the horse. "It sits quietly beyond all things."



# Ensuring Hyndland is a safe space for all

- It is so important that we can keep our school open this session.
- One of the main ways that we can work together to ensure this happens is by every member of our school community taking responsibility for keeping both themselves and others safe.



# Keeping a safe distance

- Whilst there is no requirement for young people to keep a 2m distance from each other, we must remember that many young people will require some extra personal space during this time.
- Students must keep a 2m distance from staff at all times whether in the classroom, corridors or in social areas.



# How will we ensure Hyndland is a safe space for all?

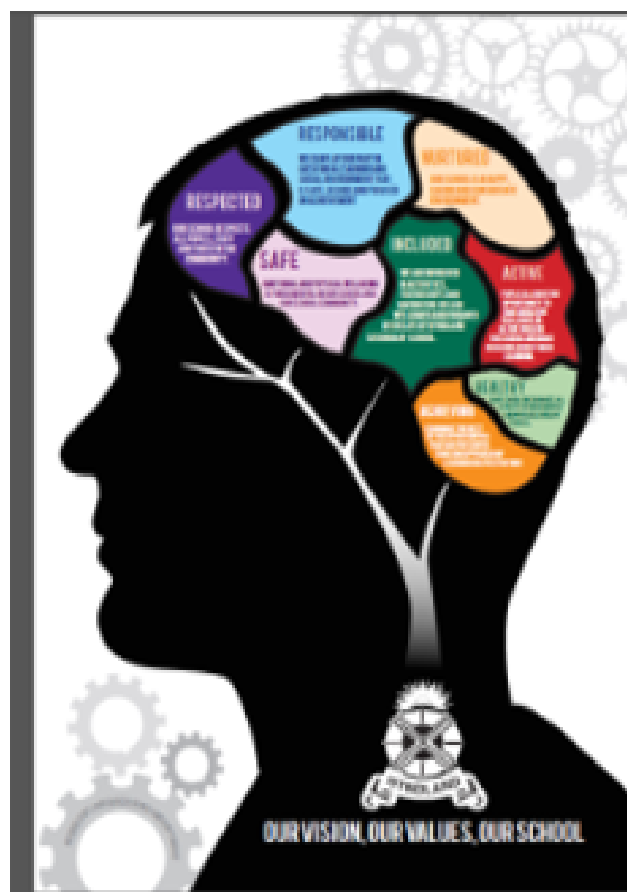
- Being Safe and Respected lies at the heart of our school vision and values.
- We have rewritten our Promoting Positive Behaviour Policy which outlines our expectations of young people to take into account new changes to this school session.
- These expectations apply to all students within our school community.

**Safe** – We contribute to a positive climate in learning and in our class by making good choices in our behaviour and attitude. We will follow the one-way system and respect other's space to help keep all members of our school community safe.

**Respected** - We understand in every classroom there are high expectations. We model respect to one another. We understand the importance of the new steps taken to keep us all safe in the school and will respect these changes.

**Active & Healthy** – We listen to each other's voice and opinions, we can think independently when required and work together to solve problems.

**Achieving** - We actively listen to staff in order to understand the purpose of the learning. We actively participate in classroom discussions and questioning.



**Included** - We encourage participation from everyone in our class. We respect other's view points and opinions.

**Responsible** - We use feedback given from teachers to help identify next steps and strengths. We are encouraged to take responsibility for our own learning.

Our Expectations of all students at Hyndland Secondary School are:

### **Safe**

I make good choices in my behaviour, attitude and movement around the school building by keeping myself and others safe.

### **Respected**

I show respect to my peers and teachers and follow the high expectations. I will respect other people's space and safety.

### **Responsible**

I use feedback given from teachers to help identify next steps and strengths.

### **Included**

I work with everyone in our class.

### **Achieving**

I listen to staff in order to understand the purpose of the learning, instructions and I get involved in class discussions.

### **Active & Healthy**

I listen to others' voice and opinions.





# How will we ensure Hyndland is a safe space for all?

## 1. Start and Finish times

- Changes have been made to avoid all students arriving and departing the school building at any one time.
- It is vital that all young people arrive to school on time.
- Late coming may result in you being unable to enter the building upon arrival and will lead to a delay in your learning.
  - Young people must leave the school grounds / surrounding area as soon as they are dismissed from school to avoid crowds gathering.

<b>S1 &amp; S2 – Enter via Airlie Building Entrance accessed via the playground</b>		<b>S3 &amp; S4 – Enter via Pupil Entrance on Lauderdale Gardens</b>	
Period 1	8.45-9.35	Period 1	8.45-9.35
Period 2	9.35-10.25	Period 2	9.35-10.45
Interval	10.25-10.45	Interval	10.45-11.00
Tutor Time	10.45-11.00		
Period 3	11.00-11.50	Period 3	11.00-11.50
Period 4	11.50-12.40	Period 4	11.50-12.40
Lunch	12.40-1.20	Lunch	12.40-1.20
Period 5	1.20-2.10	Period 5	1.20-2.10
Period 6 (Tues-Fri)	2.10-2.50	Period 6 (Tues-Fri)	2.10-2.50
Period 7 (Mon)	2.50-3.40	Period 7 (Mon)	2.50-3.40

<b>S5 &amp; S6 – Enter via Pupil Entrance on Lauderdale Gardens</b>	
Period 1	9.00-9.35
Period 2	9.35-10.45
Interval	10.45-11.00
Period 3	11.00-11.50
Period 4	11.50-12.40
Lunch	12.40-1.20
Period 5	1.20-2.10
Period 6 (Tues-Fri)	2.10-3.00
Period 7 (Mon)	3.00-3.50



# How will we ensure Hyndland is a safe space for all?

## 2. Entry and Exit Points to the school building

- All young people must use the allocated entrances and exits to the school as outlined during the induction.
- S1 and S2 students will always access the school via the main Airlie building entrance in the playground.
- S3-S6 students will always access the school via the main pupil entrance of the Lauderdale Building.
- Upon leaving the school, they should exit via the nearest exit.



# How will we ensure Hyndland is a safe space for all?

## 3. Hand sanitising upon arrival to school and other key points during the school day

- All young people **MUST** either sanitise or wash their hands upon arrival to school each morning.
- It is vital that all students maintain good hygiene during the school day which includes regular hand-washing.
- Young people must sanitise their hands before entering the Fuel Zone.



# How will we ensure Hyndland is a safe space for all?

## 4. One Way System

- All members of the school community must follow this at all times.
  - If a young person is not following this repeatedly, parents will be notified and appropriate sanctions will be used.
  - The one way system is key to avoiding face-to-face contact in school corridors as people move around the school.



# How will we ensure Hyndland is a safe space for all?

## 5. Interval and Lunch Time Arrangements

- S1 and S2 will have a different morning interval time to S3-S6.
- S1 and S2 are not permitted to leave the building at interval – weather permitting S1 will be in the playground with S2 in the fuel zone or inside the school building.
- S3 are not permitted to leave the building at interval and will be allocated the fuel zone and playground for their break.
- S4-S6 can visit the top shops but must follow guidance issued by the shop owners.
- At lunchtime S1 must remain in the playground or fuel zone (weather permitting).



# How will we ensure Hyndland is a safe space for all?

## 5. Social Times continued...

- The lower PE corridor in the Lauderdale Building is out of bounds at all times – including lunchtime and interval.



# How will we ensure Hyndland is a safe space for all?

## 6. Keeping our classrooms safe

- Every member of our school community has a responsibility to ensure both their own and the safety of others.
- Young people will be expected to take responsibility for cleaning their work station at the start and end of each lesson.
- We must also remember the importance of considering others by helping to keep the building clean and safe – disposal of litter / tissues etc.





# How will we ensure Hyndland is a safe space for all?

## 7. Stationery and Water Bottles

- Where possible all young people should bring the correct equipment to school such as pens, pencils, calculator as borrowing these can be difficult.
- Water bottles **CANNOT** be refilled in the Fuel Zone or other areas so please bring sufficient water to school for the day.



HYNDLAND PE & DANCE

**WE ARE BACK ... BUT  
WE'RE A LITTLE BIT  
DIFFERENT**



HYNDLAND PE & DANCE

- **ALL PE OUTDOORS**
- **ARRIVE IN PE KIT**
- **SOCIALLY DISTANT  
ACTIVITIES**



HYNDLAND PE & DANCE

1. CHECK THE BOARD ↓↑
2. BELONGINGS LEFT & LOCKED
3. KIT EXPECTATIONS - ARRIVE  
IN PE KIT!  
**NO JEANS, TRAINERS ONLY**