

Returning to School - a guide to navigating your way around Hyndland Secondary School – August 2020

In order to meet the government recommendations for social distancing we have introduced some changes with how student and staff will make their way around the school buildings. Prominent signage will be on display around the school but it would be helpful for students to familiarise themselves with these arrangements at home in preparation for returning to school.

1. A one way system will be in operation in both buildings

- students and staff will move in a **clockwise direction** around the corridors. Arrows will be marked on the corridor walls and floors to help with this.



STAIRWELL A
UPSTAIRS
ONLY

STAIRWELL B
DOWNSTAIRS
ONLY

2. **Stair wells will now be one way.** Stair wells will either be marked upstairs only (Green) or downstairs only (Red). In the Lauderdale building there will be 2 of each, in the Airlie there will be 1 of each.

3. In order to move around the building safely, students should go directly to their class and **should also keep apart where possible** in corridors from students and staff. Markings will be displayed in corridors to help with this.



4. **The link corridor will be one way only.** If you are moving from the Lauderdale Building to the Airlie Building you should use the link corridor.

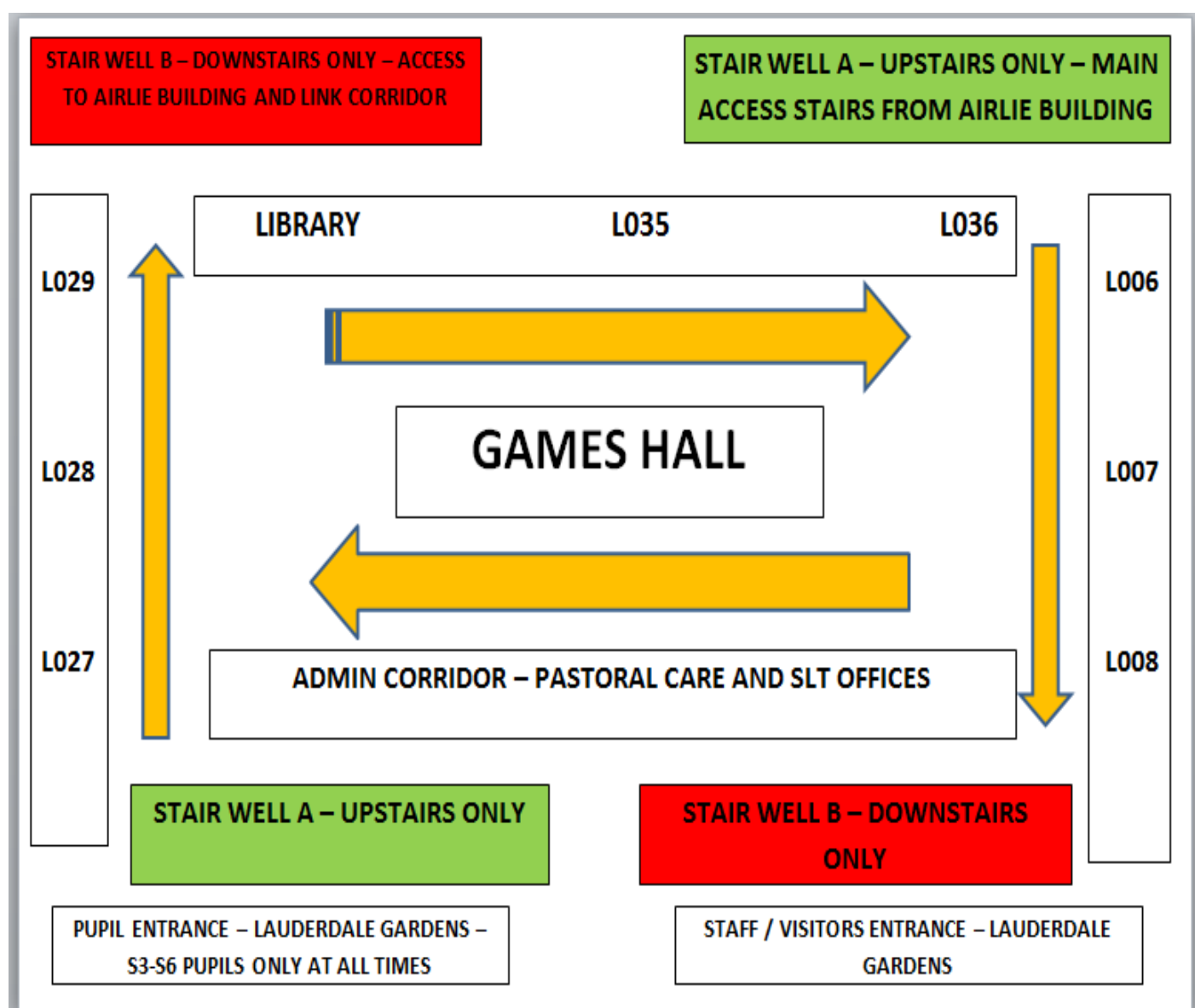
5. As the link corridor is one way only if you are moving from the Airlie Building to the Lauderdale Building, you should **exit the Airlie Building via the main entrance onto the playground and then enter the Lauderdale Building via the fire door next to the PE Department then move directly up the stairwell.**



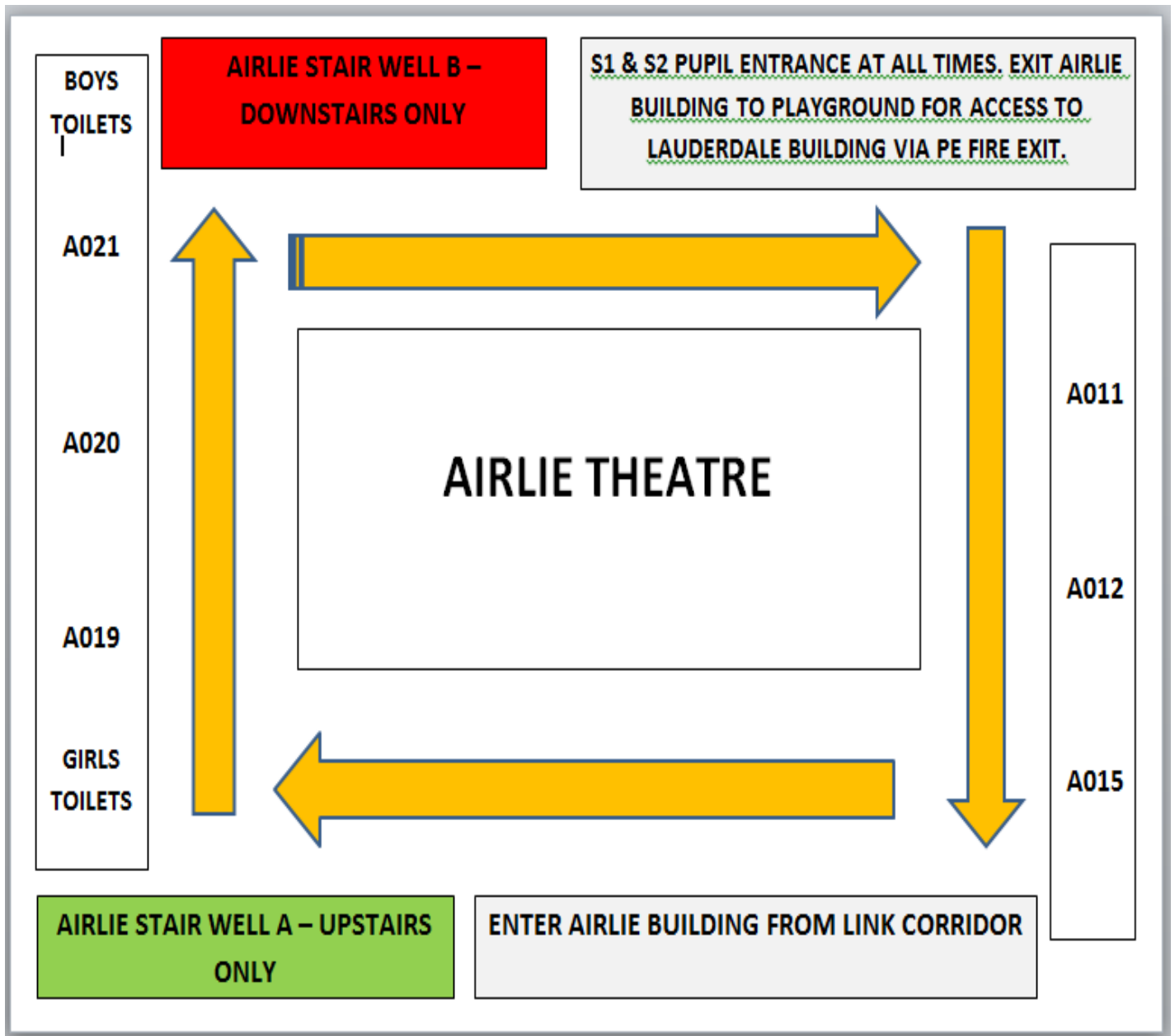
Returning to School - a guide to navigating your way around Hyndland Secondary School – August 2020

Below and on the following pages are examples of what the corridors will now look like as you move around the school in our new one-way system.

LAUDERDALE BUILDING – GROUND FLOOR



AIRLIE BUILDING – GROUND FLOOR



Returning to School - a guide to navigating your way around Hyndland Secondary School – August 2020

Entering and Exiting the School Buildings

- *All S1 and S2 students must always (in the morning, after interval and after lunchtime) enter the school via the Airlie Building Entrance located in the school playground
- *All S3-S6 students MUST always (in the morning, after interval and after lunchtime) enter the school via the pupil entrance on Lauderdale Gardens

One Way System

All students and staff will move in a clockwise direction around the school corridors.

Stair wells will be one way – Stairwell A (Green) will be upstairs only with Stairwell B (Red) being downstairs only.

Arrows will be marked on the floors in corridors to help direct the flow of movement around the building.

Following the new one way system may mean that students have to go down stairs and then back up again to reach their timetabled class or walk around the full corridor square to get to your next class but this is the only way that we can ensure we keep everyone safe.