

OUR VISION  
OUR VALUES  
OUR SCHOOL



# Welcome to Hyndland Secondary School



S2 Parental Focus Group – Tuesday 7<sup>th</sup> December  
2021



# Outline of this evening:

- Welcome – Mrs L Edgerton – Head Teacher – 5 minutes
- Supporting our young people at Hyndland – Belle and Mia
- Important information for S2 families – Mrs Forrester DHT – 10 minutes
- Overview of S2 into S3 options process – Mrs Hayes DHT – 10 minutes
- Parental feedback – an opportunity for the school to capture the views of S2 families - 15 minutes





# Pastoral Care Staff:

- Every young person is assigned to a House Team which consists of PT Pastoral Care and House DHT.
- Pastoral Care is the main link between school and home.
- Open door policy in the Pastoral Care base for all young people.
- PT Pastoral Care delivers PSE to their house classes – big focus on recovery, resilience and relationships.



# Supporting our learners well-being – the extended team:

- Our school counsellor is based in the school 3 days per week – Laura who works for Action for Children.
- Action for Children have also been delivering a programme to our S3 students called ‘the Blues programme’.
- Two Youth Workers from FARE are based in the school – Jenny and Angela – both involved in running various group work projects with S1/S2 students focusing on confidence building / conflict management / resilience / relationships.
- Team of Pupil Support Assistants run many supports including our Seasons for Growth group for young people who have experienced bereavement.



# Supporting our learners well-being – the extended team:

- Our PSA team run 'Hug In a Mug' each morning – this runs from 8am and provides young people with a chance to chat and have breakfast before going to class – well attended by S1 and S2 students.
- Our MCR Pathways Coordinator Ian McClymont runs weekly group work with a team of S2 students focused on raising aspirations and career insight.
- Many of our senior students are teamed up with S1 and S2 students as mentors and offer subject support including literacy and numeracy for young people who require additional support.



# Session 2 – relevant information for S2 families:

## Key Dates for the diary:

- Week beginning 11<sup>th</sup> October – tracking report 1
- Week beginning 17<sup>th</sup> January – tracking report 2
- Week beginning 7<sup>th</sup> March – tracking report 3
- End February – Meet the House Family Options Event – in person
- End February – Date TBC – S2 into S3 Virtual Options Evening
- 16<sup>th</sup> March 2022 – S2 Virtual Parents Meeting



# What do the S2 tracking reports tell me?

- Each of the three tracking reports should provide families with an overview of how their young person is progressing with their learning in S2.
- A grade is given for 3 behaviours; effort in class, effort out of class (home learning) and conduct & attitude.
- The progress rating identifies how well each learner is progressing with their learning in each subject – if a young person is awarded a grade 4 this means they are on track with their learning and making excellent progress.
- Generally speaking the higher the number given for each of the above, the more positive the report is.





# How can the tracking report be used to inform next steps?

- When staff complete tracking reports, teachers will conduct learner conversations with groups of students.
- These learner conversations focus on how our young people are progressing and perhaps most importantly – what can they do next to make further progress.
- During PSE after each tracking report, young people will carry out a self-evaluation of their report and identify next steps and targets.
- Families can use the ratings for effort and conduct to identify if areas need to be improved upon.



# As an S2 parent, how can I support my young person's learning at home?

- Ask them questions about their learning each day – although we cannot always guarantee you will get an answer!
- Check Satchel one (Show my Homework) regularly with your young person to ensure they are completing tasks as required.
- Make use of resources on the school website to support family learning – useful videos on study skills, supporting literacy, supporting numeracy and homework.
- Keep an eye out for updates on our Family Learning Group who run family learning challenges throughout the year.
- Talk to the school if you have any concerns, no matter how small – we are still here to help!



# What will the S2 parents meeting look like?

- We appreciate that our S2 families are eager to meet staff – our teaching staff are looking forward to this too!
- Our S2 parents meeting will take place via telephone calls.
- Parents will use an online booking system to book times for phone calls from staff.
- Parents will be able to book around 6 subject appointments.
- Pastoral Care, Principal Teacher of Pupil Support (Learning) and our School Careers Advisors from Skills Development Scotland will also be able to make telephone calls – that parents can book.
- Each appointment will last five minutes.



# Celebrating success at Hyndland:

Despite the challenges that still continue with regards to Covid, our school continues to be a busy, vibrant learning space:

- June 2021 – first Glasgow secondary school to achieve the Gold UNICEF Rights Respecting School Award.
- September 2021 – achieved the Gold LGBT Charter Award in conjunction with LGBT Youth Scotland – we are now one of only a handful in Glasgow who have achieved Gold.
- A team of S2 recently won the Glasgow Digi-inventors Award for the health & well-being app they created.
- S2, S3 and S6 students participated in various events to mark COP26.
- S1 & S2 House Kindness Competition



# Extra-curricular life at Hyndland:

- A key highlight this year has been the return of our extensive lunchtime and after school extra curricular events.
- A wide range of clubs and activities take place during and after the school day.
- These activities include; Sports, Music, Science, Cyber Competitions, Chess, Chat and Chill and LGBTQ+.
- The full list of times and locations can be found on our school website.



# Key contacts for the school – Your House Family:

## Katrine House

**Pastoral Care:** Mr Squire  
gw10squiretorgbor@glow.ea.glasgow.sch.uk

**House Depute:** Mrs Forrester  
gw09forresterlaura@glow.ea.glasgow.sch.uk

## Lomond House

**Pastoral Care:** Mrs Black  
gw21blackwendyjane@glow.ea.glasgow.sch.uk

**House Depute:** Miss Stewart  
gw13stewartjodie3@glow.ea.glasgow.sch.uk

## Rannoch House

**Pastoral Care:** Mrs Mills  
gw09millscatherine@glow.ea.glasgow.sch.uk

**House Depute:** Ms Letford  
gw10smedleyvicki@glow.ea.glasgow.sch.uk

## Torridon House

**Pastoral Care:** Mr Carstairs  
gw09carstairsraymond@glow.ea.glasgow.sch.uk

**House Depute:** Mrs Hayes  
gw09hayesclare@glow.ea.glasgow.sch.uk

## Hyndland Houses

As a school we know the importance of building healthy and reliable relationships. We want to make sure our families know who to contact when they need help and support. Please use these contacts in the first instance when making contact with the school. Thank you

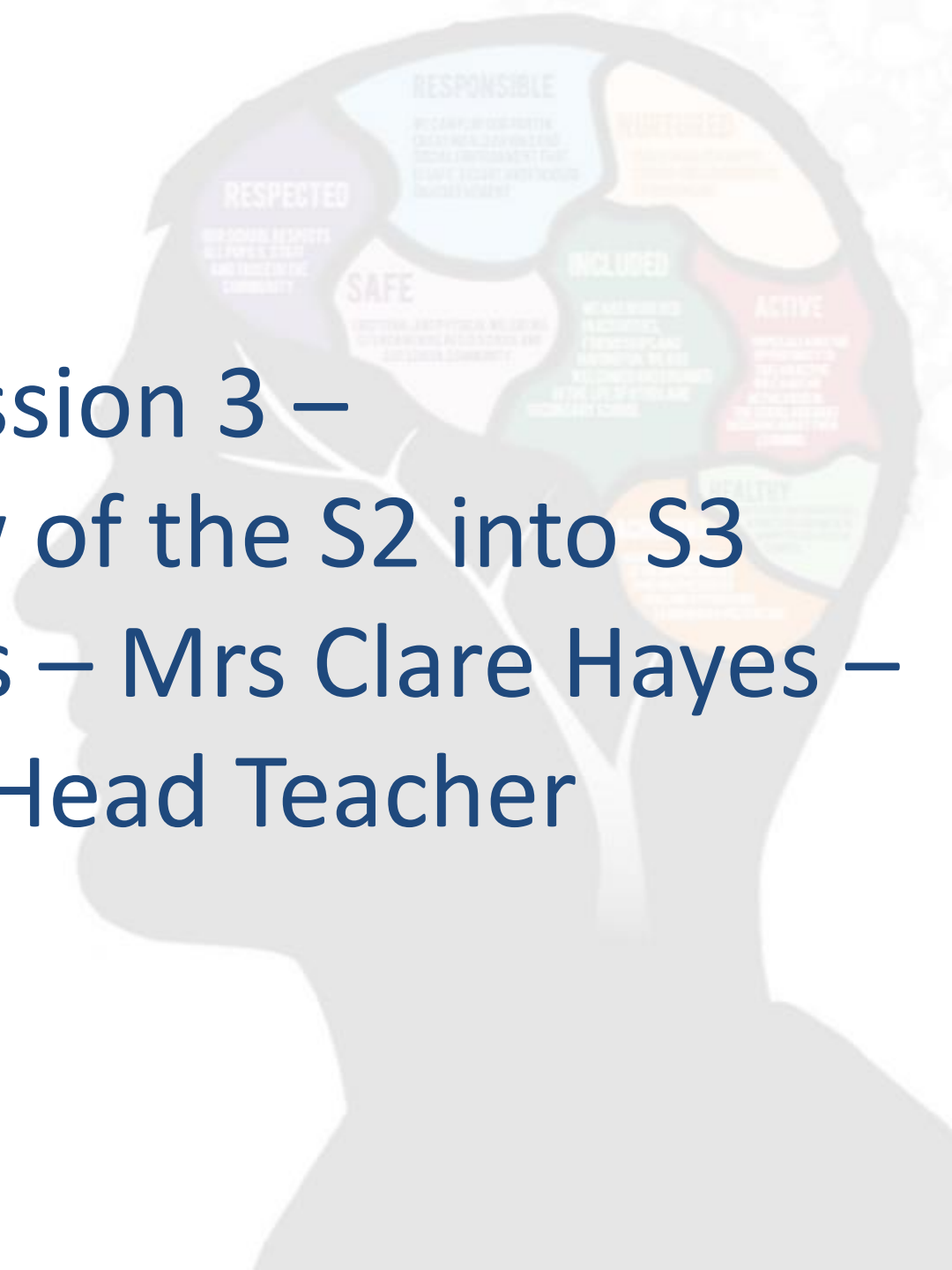


Ph: 0141 582 0130

OUR VISION  
OUR VALUES  
OUR SCHOOL



# Session 3 – An overview of the S2 into S3 Options Process – Mrs Clare Hayes – Depute Head Teacher





# Curricular Areas

- Expressive arts
  - Languages and literacy
  - Health and Wellbeing
  - Mathematics and Numeracy
  - Religious and Moral Education
  - Sciences
  - Social Studies
  - Technologies
- 
- PSHE, RE and PE are 'core' subjects







# Making decisions on Course Planning

- S1-S3 is designed to provide a broad, general education, but there is scope for choices. The S2 Course Choice Programme allows pupils to focus on subjects in which they have a particular aptitude or interest increasing specialisation at the end of S2.
- This flexibility helps ensure learners have the right level of challenge and support & will provide a strong basis for moving on to the learning for qualifications.



# What does this mean for qualifications?

- English and Maths + 6 Choices

Curricular area	Curricular area	Curricular area	Curricular area	Curricular area
Expressive Arts	Science	Social Subjects	Technologies	2 Elective Choices

- This will allow most young people to attain eight qualifications at the level most appropriate to their ability by the end of S4.
- Pupils will then progress to the most appropriate courses as they narrow further to 5 courses in S5.



# Wellbeing – 5 Ways to Wellbeing!

- We have introduced a wellbeing period in S3 Core
- Current choices include:  
Holiday Spanish, Couch to 5k, Fitness, Dance,  
DofE Planning, Scots Language, Cooking skills,  
Creative Art & Design.



TALK & LISTEN,  
BE THERE,  
FEEL CONNECTED



DO WHAT YOU CAN,  
ENJOY WHAT YOU DO,  
MOVE YOUR MOOD



REMEMBER  
THE SIMPLE  
THINGS THAT  
GIVE YOU JOY



EMBRACE NEW  
EXPERIENCES,  
SEE OPPORTUNITIES,  
SURPRISE YOURSELF

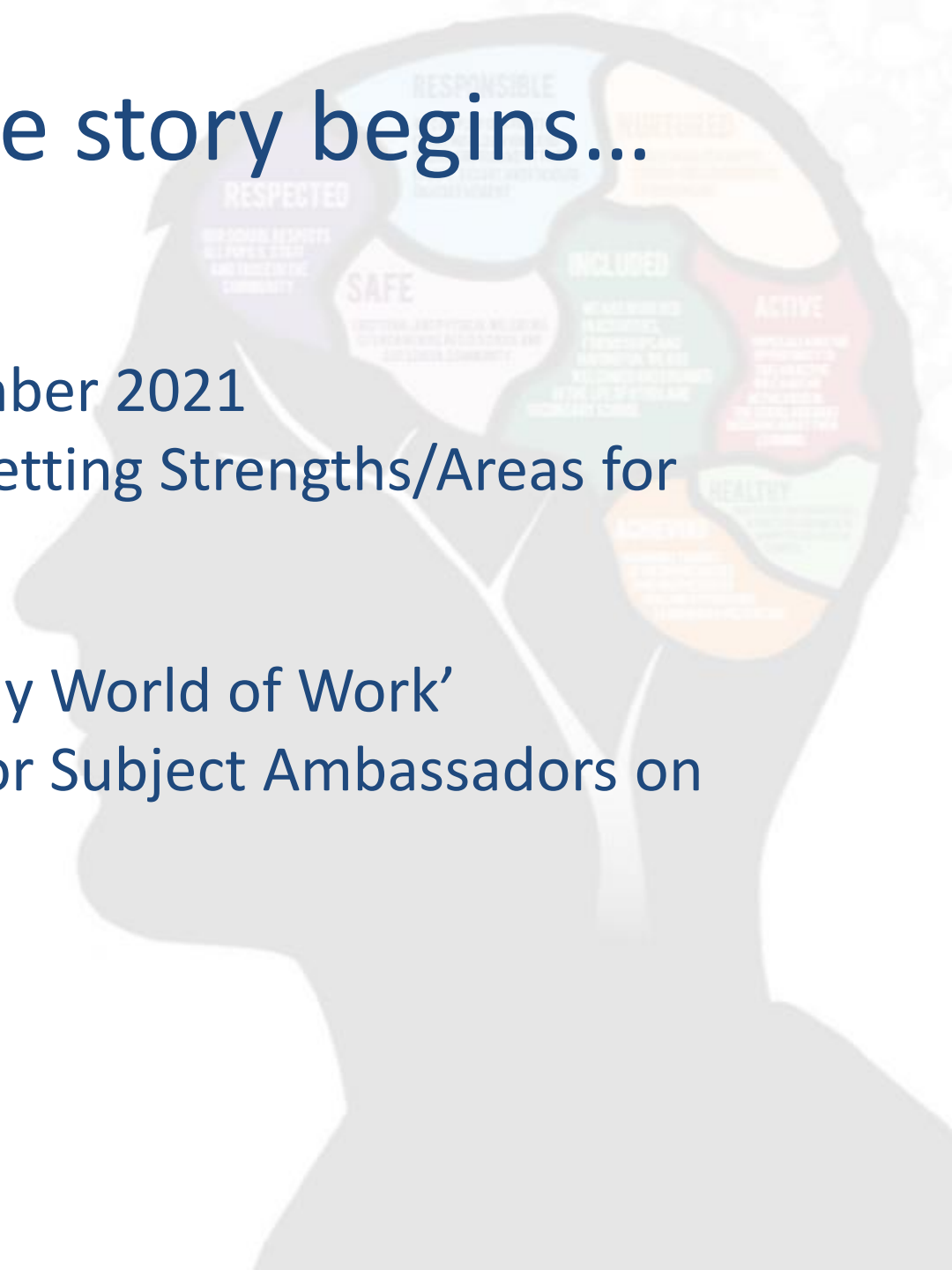


Your time,  
your words,  
your presence



# The story begins...

- Interim Reports - December 2021
- Self Evaluation: Target Setting Strengths/Areas for Development
- PSE Support
- Pupils registered with 'My World of Work'
- Presentations from Senior Subject Ambassadors on subjects and pathways





# continued....



- Interactive My Strengths and My DNA
- Research on specific professions/courses and specific entry requirements
- General research on areas of interest
- Appointment with the Career Adviser



## Next Steps.....

- Course Choice Booklet posted on Teams and School Website along with Subject video clips January / February 2022
- S2 pathways guide WB 22nd February 2022
- Further S2 tracking March 2022
- Further discussion in PSHE and at home
- Each young person will have a 30min One to One interview with Careers Advisor – scheduled in March 2022.



# Who Can I Ask for Advice?

- Pastoral Care Staff and Personal Support Tutors
- Careers Adviser
- Subject Teachers
- Senior Leadership Team
- Mentors
- Parents/carers
- Family



OUR VISION  
OUR VALUES  
OUR SCHOOL



# Useful Websites

- Planitplus - Learning Zone
- Mappit - Apprenticeships/Training
- WorkIt - Employment
- My World of Work – Wide range of support

