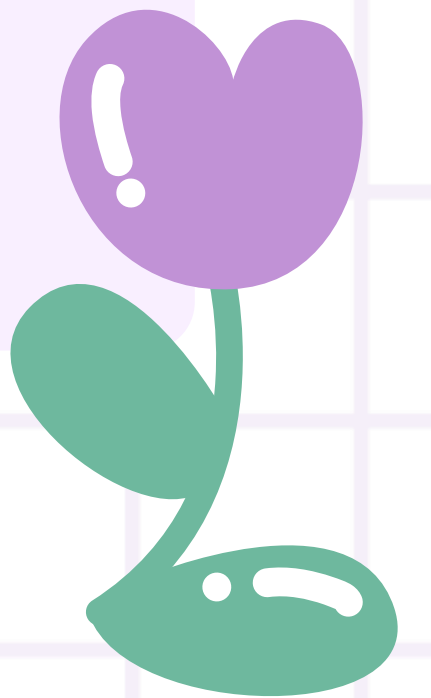
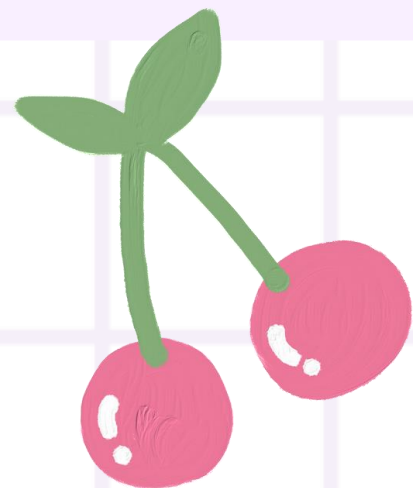




List Of Content

- N5 vs Higher
- Folio
- RUAE
- Critical reading

- Support tools
- Supported study



N5 vs H

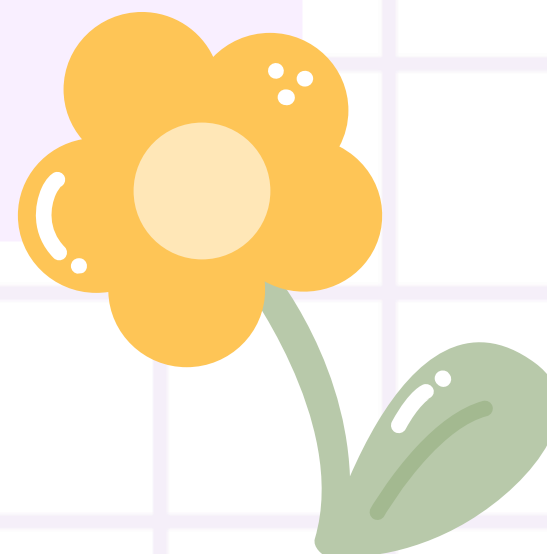
Coursework
Folio 30%

Exam
RUAE 30%
Critical reading 40%

National 5
-Marks for identifying
the quotations

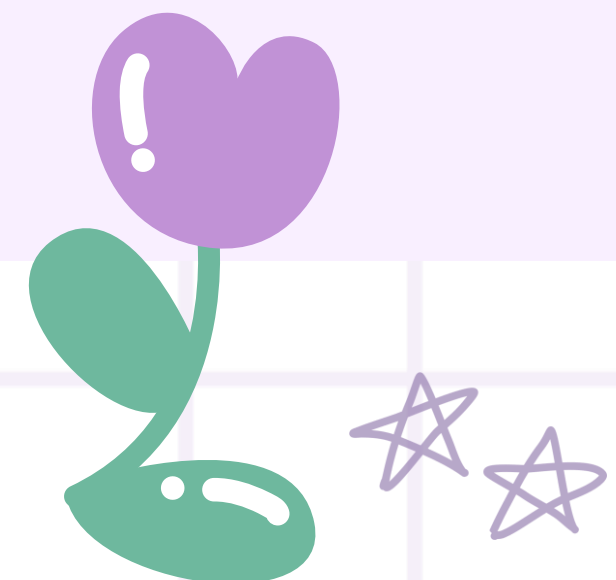
Higher

- More involved analysis
- Focus on spelling and grammar
- 5 mark question (RUAE)



Folio

- Worth 30% of course
- 1 essay - creative or discursive
- Plan and first draft must be done under teacher supervision.
- 16th September - fortnight of classwork (research and beginning of first draft).
- 10th October - first draft deadline



Folio

Creative

- Short story
- Chapter of a novel

Should include:

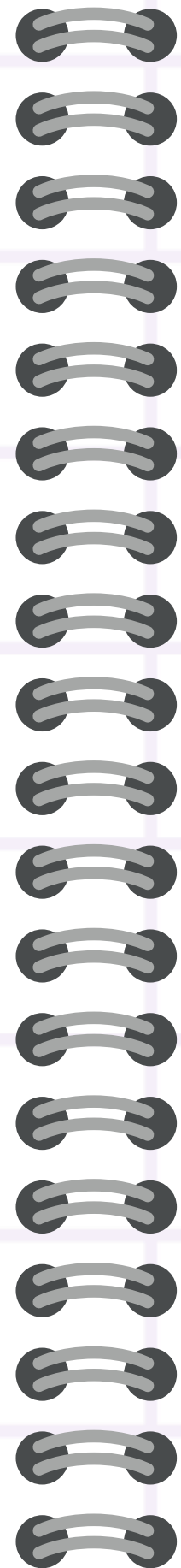
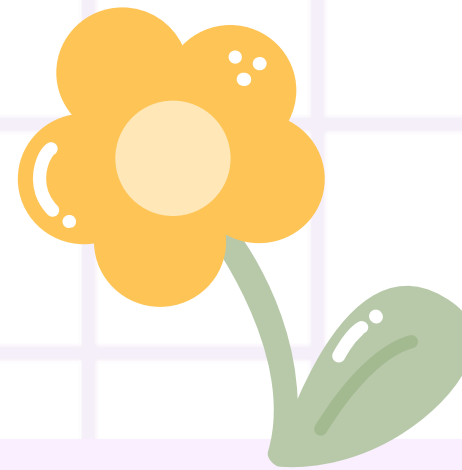
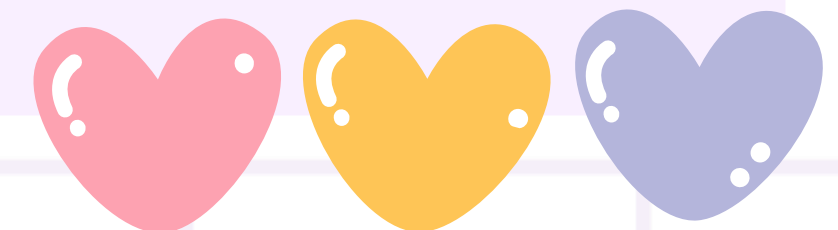
- Characterisation
- Setting
- Genre
- Mood/atmosphere

Discursive

- Persuasive essay

Should include:

- Research
- Data / statistics
- Clear arguments
- Bibliography

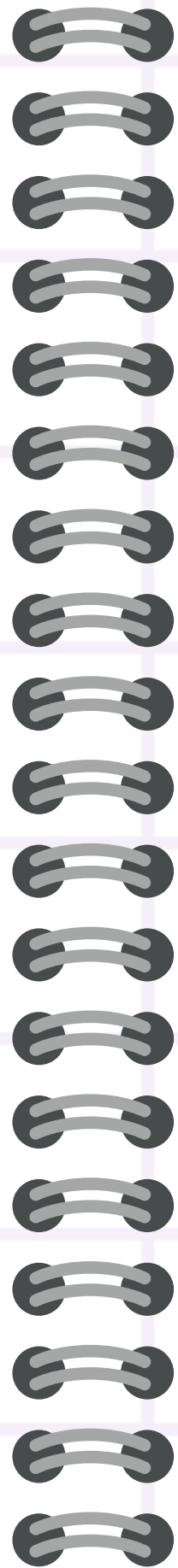
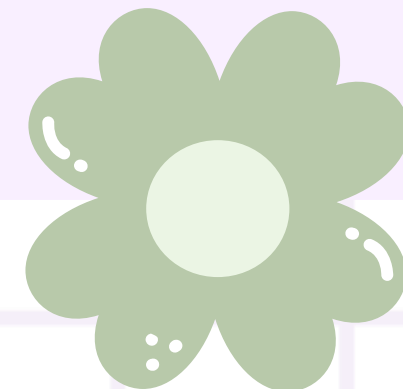
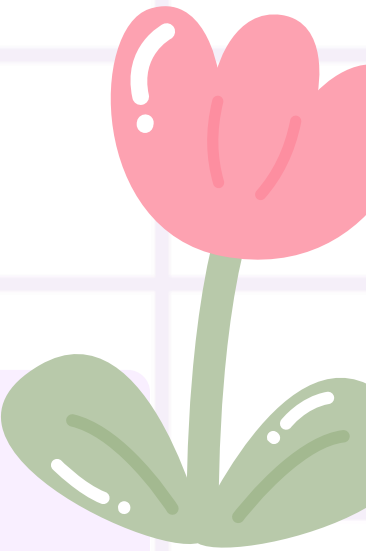


RUAE

Worth 30% of the entire year.

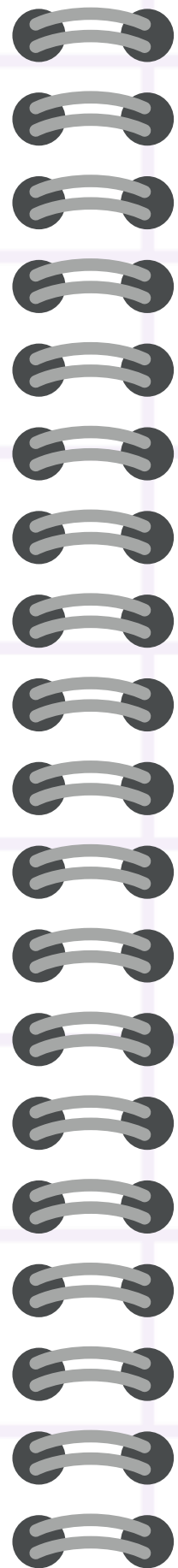
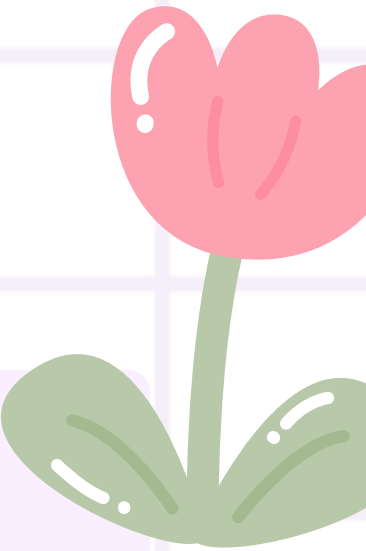
A mixture of questions:

- Understanding
- Analysis
- Evaluation



Studying for RUAE

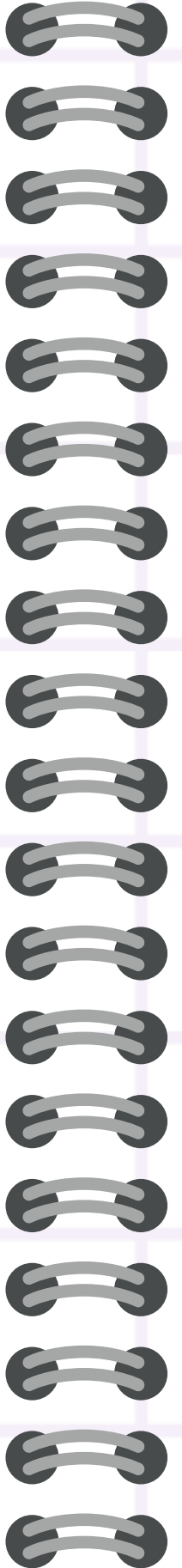

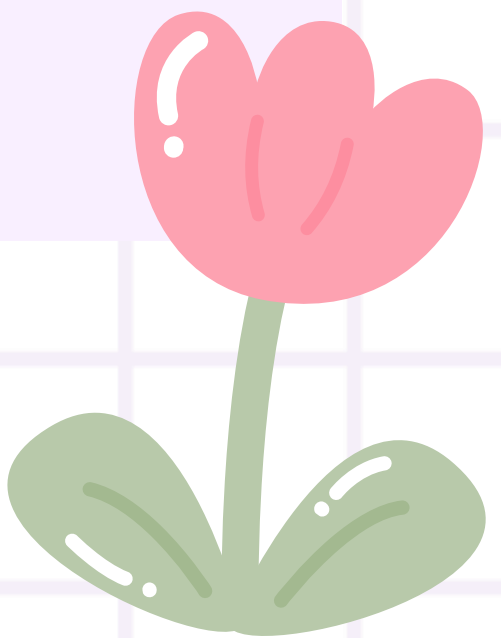

- Familiarise yourself with the different types of questions.
- Know what you are being asked and what type of answer they are looking for.
- Not all questions are answered in the same way.
- Reading newspapers to become familiar with the language and style of RUAE papers.
- Using past papers to practice.
- Using the provided answer to key to check your answer and see what is being looked for.





Critical reading




- 
- 40% of the exam
 - 1 hour 30 minutes
 - Scottish set text and a critical essay combined
 - SST is provided by CE text is not provided
 - Exam is a booklet with all texts, students must turn to the correct page.
- 
- 
- 

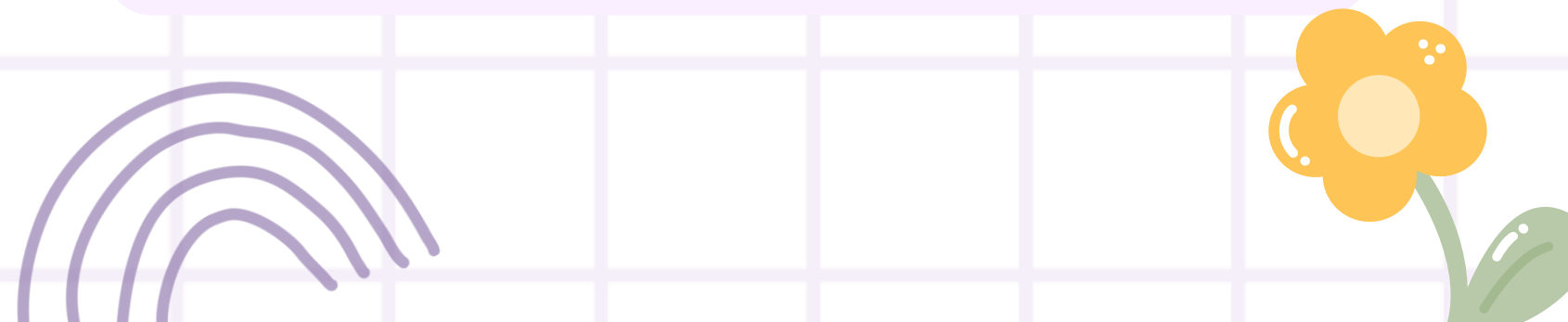


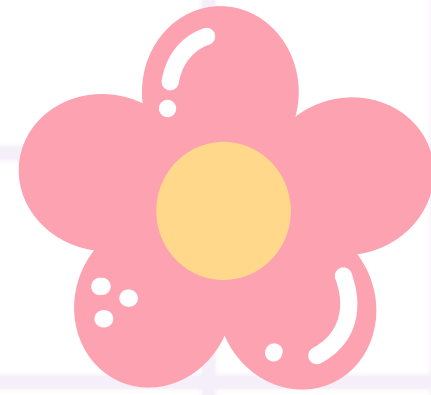
Critical Reading

Scottish set text

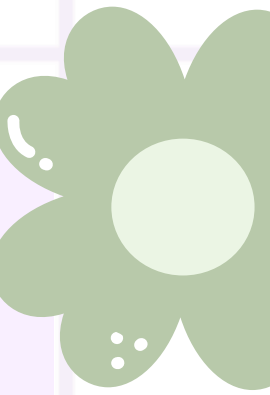
- Series of questions on texts already studied in class
 - 6 poems OR 4 short stories OR 1 play or novel
 - 8 mark (N5) / 10 mark (H) question at the end
- 

Critical essay

- Essay written in exam conditions
 - No notes or copy of the text will be allowed in the exam.
 - Marker looking for extreme familiarity with text and accurate structure / grammar.
- 



Support tools



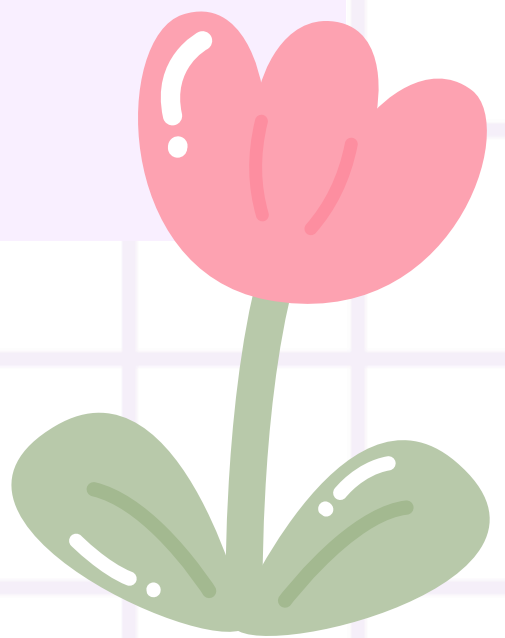
[SQA website](#) - past papers, marking keys, course guidance

[BBC Bitesize](#) - guidance on all elements of the course

[SparkNotes](#) - helpful guides on a variety of texts

Microsoft Teams - class materials and assignments will be uploaded here

Scholar - accessible through Glow homepage



Supported Study

After school - Wednesdays (usually starts end of Sept / Oct)

Saturday mornings - dates to be confirmed

